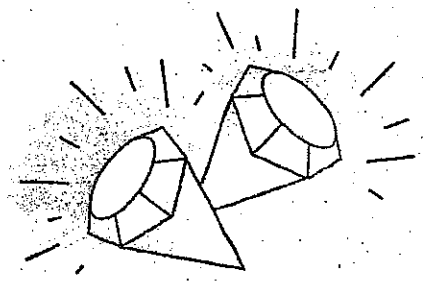


Similes

A **simile** uses the words **like** or **as** to compare two things.

Examples:

The snow glittered **like** diamonds.
He was **as** slow **as** a turtle.



Directions: Circle the two objects being compared in each sentence.

1. The kittens were like gymnasts performing tricks.
2. My old computer is as slow as molasses.
3. When the lights went out in the basement, it was as dark as night.
4. The sun was like a fire, heating up the earth.
5. The young girl was as graceful as a ballerina.
6. The puppy cried like a baby all night.
7. He flies that airplane like a daredevil.
8. The girl was as pretty as a picture.
9. The snow on the mountain tops was like whipped cream.
10. The tiger's eyes were like emeralds.

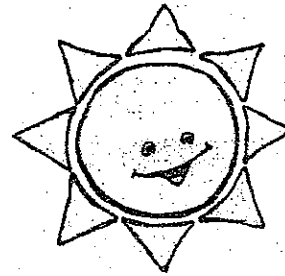
Directions: Complete the simile in each sentence.

11. My cat is as _____ as _____.
12. He was as _____ as _____.
13. Melissa's eyes shone like _____.
14. The paints were like _____.
15. The opera singer's voice was as _____ as _____.
16. My friend is as _____ as _____.



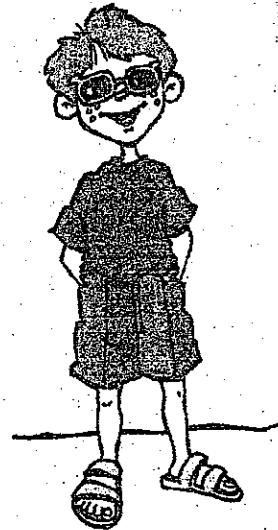
Metaphors

A **metaphor** is a direct comparison between two things. The words **like** or **as** are not used in a metaphor.



Example: The sun is a **yellow ball** in the sky.

Directions: Underline the metaphor in each sentence. Write the two objects being compared on the line.



1. As it bounded toward me, the dog was a quivering furball of excitement.

2. The snow we skied on was mashed potatoes.

3. John is a mountain goat when it comes to rock climbing.

4. The light is a beacon shining into the dark basement.

5. The famished child was a wolf, eating for the first time in days.

6. The man's arm was a tireless lever as he fought to win the wrestling contest.

7. The flowers were colorful circles against the green of the yard.



LET'S EXAGGERATE -- USE HYPERBOLE!

When you deliberately exaggerate in writing or speaking because you want to create a strong effect, you are using hyperbole. You have heard people using hyperbole and you have used it yourself. Do any of these sound familiar?

"I am so hungry I could eat a horse."

"Donald, I've told you a million times to sit down."

Can you think of others you have heard around school or home? Below, you will find eleven questions to which the answers could be written using hyperboles. Answer in complete statements.

1. How big was the pizza?

2. How powerful was the truck driver?

3. How bad was the movie?

4. How sick did the roller coaster make the kids?

5. How fast is the car?

6. How mad was his father?

7. How much can you eat?

8. How boring was the class?

9. How loud was the rock group?

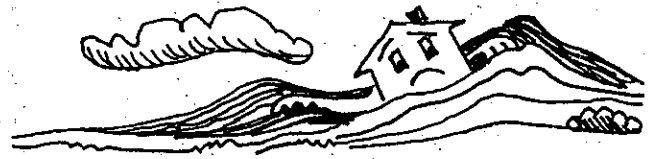
10. How hard are you working?

11. How happy were you on the last day of school?

Have fun comparing your hyperbole with your classmates.

PERSONIFICATION -- MAKING "IT" COME ALIVE!

When you write about objects, things, ideas, and animals as if they were human, you are using personification. Do you see the root word "person" in the word *personification*? You will agree that this technique is well named. Look at how much more interesting it is to read!



Instead of: The cabin was at the side of the mountain.

Personify the cabin and write: The cabin clung for dear life to the side of the mountain.

Read the statements and questions. When you answer the questions, use personification in your answers and make these things come alive! Use complete sentences.

1. The happy family moved out of the house. What did the house feel?

2. His breakfast oatmeal was in a bowl. How did the oatmeal feel or look?

3. The diseased tree was cut down. What did the tree think or feel?

4. The musician started to play on the tight new drums. How did the drums feel?

5. He popped the beautiful red bubble gum ball into his mouth. What did the bubble gum feel?

6. The robot was left behind by its master. How did it feel?

7. The strings on the guitar broke one by one. How did the guitar feel?

8. The boy took off his shoes and his toes poked out through the holes in his socks. How did his toes feel?

9. Broken and tossed aside, the toys were piled in a box. How did the toys feel?

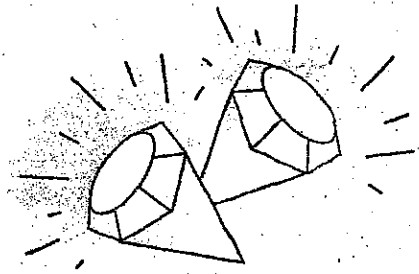
10. The volume on the record player was turned high. What was the record player feeling?

Similes

A **simile** uses the words **like** or **as** to compare two things.

Examples:

The snow glittered **like** diamonds.
He was **as** slow **as** a turtle.



Directions: Circle the two objects being compared in each sentence.

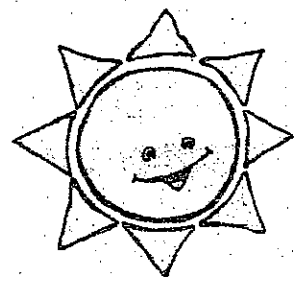
1. The kittens were like gymnasts performing tricks.
2. My old computer is as slow as molasses.
3. When the lights went out in the basement, it was as dark as night.
4. The sun was like a fire, heating up the earth.
5. The young girl was as graceful as a ballerina.
6. The puppy cried like a baby all night.
7. He flies that airplane like a daredevil.
8. The girl was as pretty as a picture.
9. The snow on the mountain tops was like whipped cream.
10. The tiger's eyes were like emeralds.

Directions: Complete the simile in each sentence.

11. My cat is as _____ as _____.
12. He was as _____ as _____.
13. Melissa's eyes shone like _____.
14. The paints were like _____.
15. The opera singer's voice was as _____ as _____.
16. My friend is as _____ as _____.



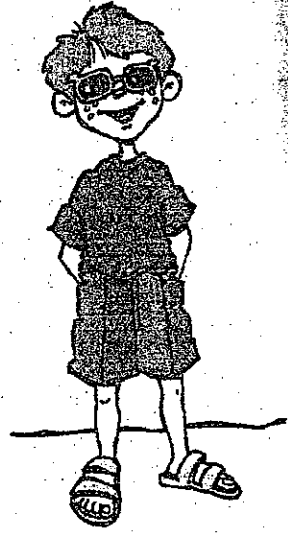
Metaphors



A **metaphor** is a direct comparison between two things. The words **like** or **as** are not used in a metaphor.

Example: The sun is a **yellow ball** in the sky.

Directions: Underline the metaphor in each sentence. Write the two objects being compared on the line.



1. As it bounded toward me, the dog was a quivering furball of excitement.

2. The snow we skied on was mashed potatoes.

3. John is a mountain goat when it comes to rock climbing.

4. The light is a beacon shining into the dark basement.

5. The famished child was a wolf, eating for the first time in days.

6. The man's arm was a tireless lever as he fought to win the wrestling contest.

7. The flowers were colorful circles against the green of the yard.

